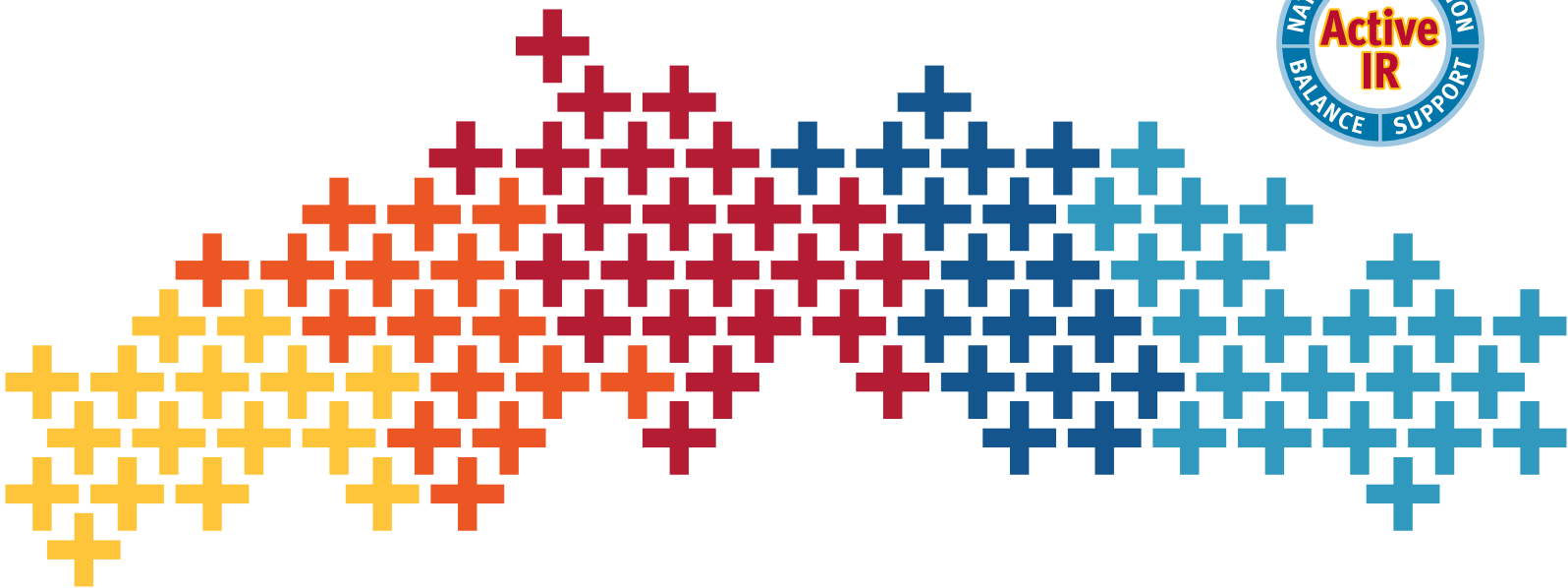




# SPM Active®

A natural way to support the body's ability to resolve physical stress.\*



Don't Block It. Resolve It.

# Understanding the Immune Response

When the body experiences physical stress, the immune system is activated. The body's natural immune response is a healthy process that has an **initiation phase** and a **resolution phase**.<sup>1,2</sup>

**Initiation Phase:** Tissue is negatively affected (such as over-exercising muscle), initiating the body's natural protective response.<sup>2-4</sup>

- Eicosanoid lipid mediators (e.g., LTB<sub>4</sub>, PGE<sub>2</sub>), cytokines, chemokines, and other messengers are released to orchestrate an immune response
- Neutrophils (the most abundant white blood cells) converge upon the affected area and mount the body's response

**Resolution Phase:** Specialized pro-resolving mediators (SPMs) are produced within tissue by immune cells and function as "resolution agonists" to promote resolution (i.e., completion) of physical challenges.<sup>\*1,5,6</sup>

- Neutrophil activity is curtailed when their task is accomplished
- Initiation phase messengers decrease
- Macrophages remove dead neutrophils, bacteria, and debris
- Tissue is remodeled
- Return to homeostasis and normal immune surveillance

If the immune response is left unresolved, tissues can be negatively impacted over time.<sup>\*7,8</sup>

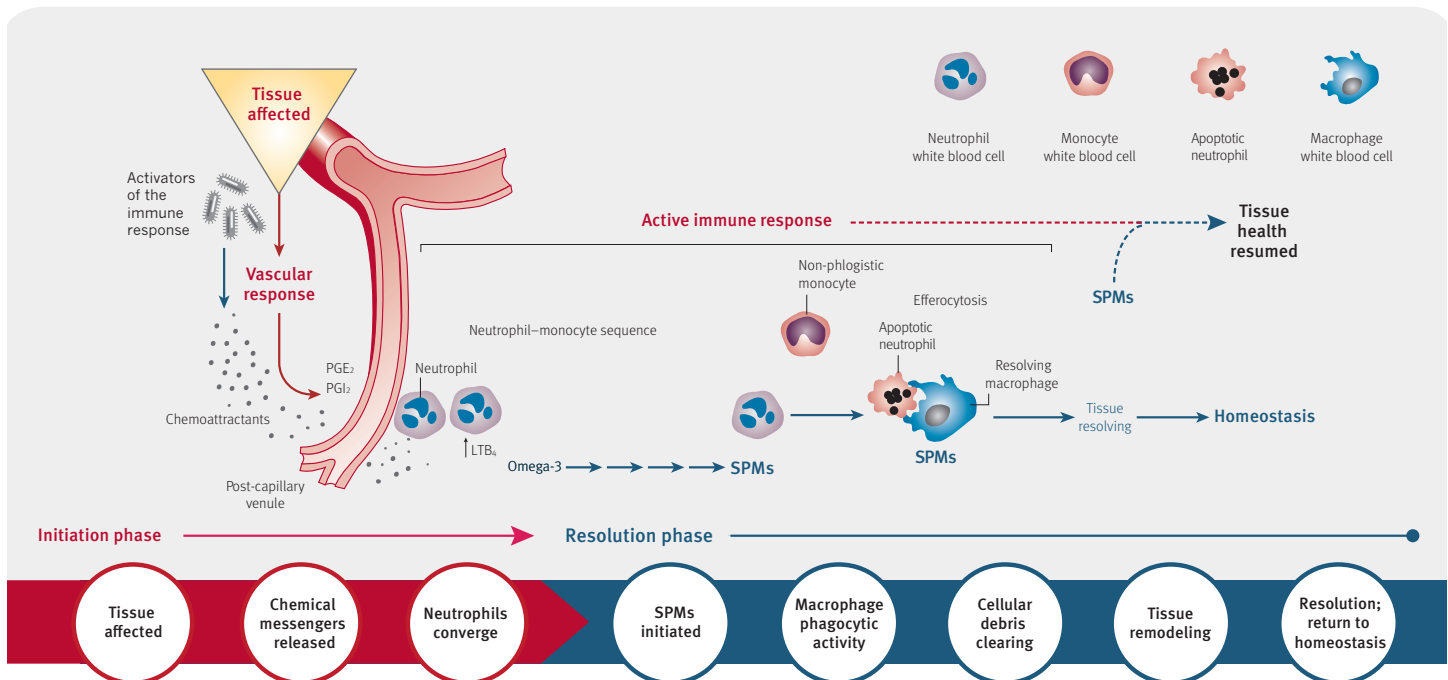
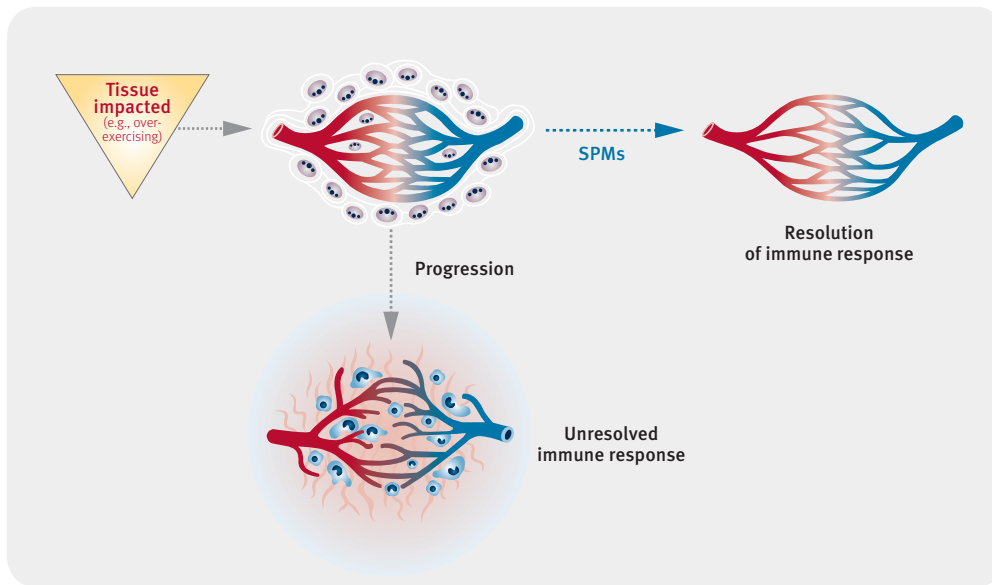


Figure adapted from:  
 Serhan CN. *Nature*. 2014;510:92-101.  
 Serhan CN et al., *Semin Immunol*. 2015;27(3):200-15.  
 Lopez-Vicario C, et al., *Eur J Pharmacol*. 2016;785:133-43.

# Resolve it with SPM Active®

A specialized, fractionated marine lipid concentrate offering a targeted nutritional approach that is designed to support the body's natural capacity to respond to physical challenges and resolve physical stress.

- SPM Active is a unique revolutionary new formula featuring standardized levels of SPMs derived from a specialized fraction of fish oil
- SPM Active is standardized to 17-HDHA and 18-HEPE which have been shown to have pro-resolving activity
- SPM Active is a targeted nutritional approach designed to facilitate the body's natural transition to resolution of physical stress\*

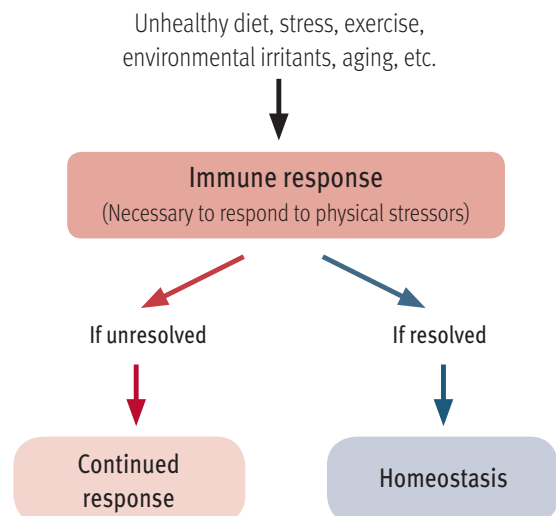


## Lifestyle and Nutrition Influence SPM Status

Appropriate SPM production relies on nutrition, lifestyle behaviors, and health status. Insufficient production of SPMs may interfere with the resolution of an immune response and consequently impact health. Factors that may affect the need for SPMs include:<sup>\*6,7</sup>

- The aging process
- Unhealthy dietary patterns, such as excess intake of low quality dietary fats and/or carbohydrates
- Too little exercise or overexertion
- Other physical stressors
- Overload of environmental irritants

Extensive preclinical research suggests specialized pro-resolving mediators play a key role in the resolution of the immune response.<sup>\*1,2,5</sup>



\* These statements have not been evaluated by the Food and Drug Administration. This product is not intended to diagnose, treat, cure, or prevent any disease.

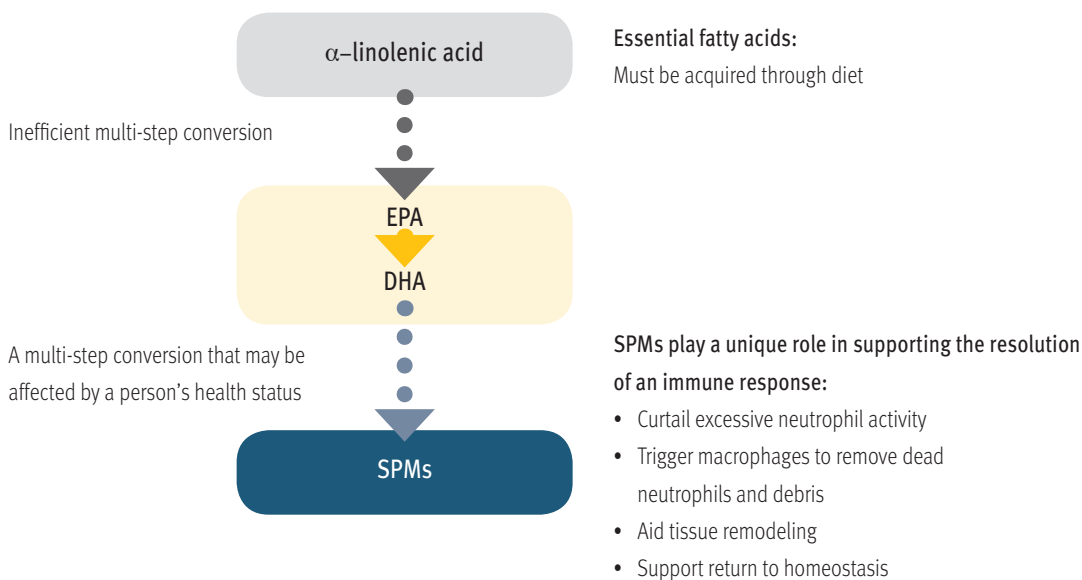
## Leading-Edge Science in the Resolution of the Immune Response

- Scientists traditionally believed that resolution of the immune response was a passive process
- Recently, research at leading-edge universities discovered that a structured and orderly system of resolution exists
- SPMs are naturally produced in tissues during the resolution phase and function as “resolution agonists,” orchestrating the completion of an immune response and return to homeostatic balance\*<sup>1,5</sup>

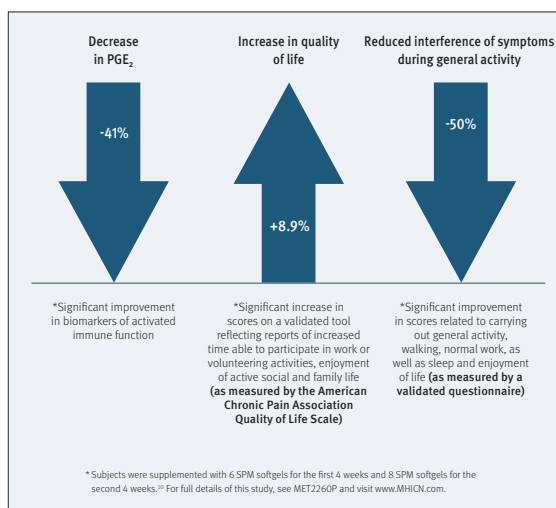
## SPMs Have a Unique Biological Action: Resolution of the Immune Response

- EPA, DHA, and other long-chain polyunsaturated fatty acids (PUFAs) are not a substitute for SPMs
- EPA and DHA may be converted into SPMs; however, there are many steps in this process. This process may be affected by a person’s health status<sup>1</sup>
- SPMs aid the resolution of the immune response without suppressing immune defenses\*<sup>1,2,5</sup>

Lifestyle factors may impact body levels of SPMs; therefore, providing SPMs may help promote resolution of the immune response\*<sup>5</sup>



## Clinical Case Study of Pro-Resolving Activity of SPM Supplementation



### References:

1. Serhan CN. *Nature*. 2014;510:92-101.
2. Recchiuti A. *J Gerontol Geriat Res*. 2014;3:151.
3. Lawrence T, Willoughby DA, Gilroy DW. *Nat Rev Immunol*. 2002;2:787-795.
4. Samuelsson B, Dahlen SE, Lindgren JA, Rouzer CA, Serhan CN. *Science*. 1987;237:1171-1176.
5. Spite M, Claria J, Serhan CN. *Cell Metab*. 2014;19:21-36.
6. Serhan CN, Brain SD, Buckley CD, et al. *FASEB J*. 2007;21:325-332.
7. Nathan C, Ding A. *Cell*. 2010;140:871-882.
8. Tabas I, Glass CK. *Science*. 2013;339:166-172.
9. Calder PC, Yaqoob P. *Biofactors*. 2009;35:266-272.
10. Metagenics Data on File, 2016.

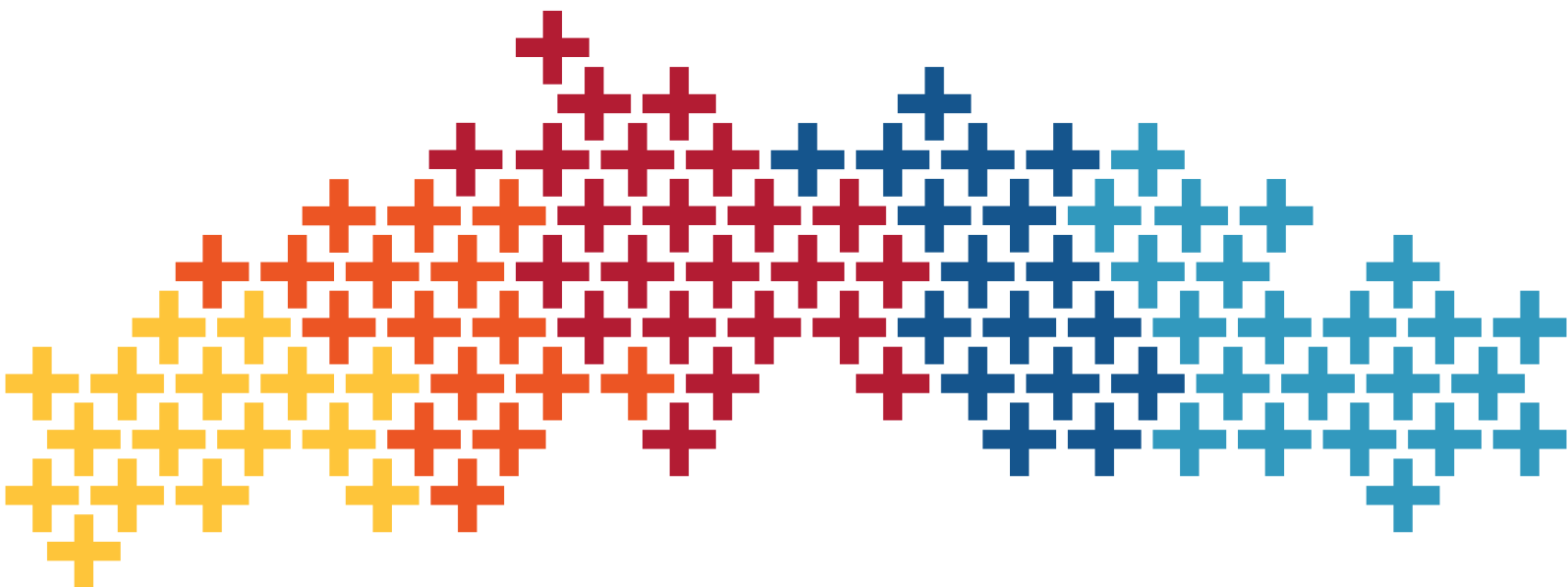
# SPM Active®



SPM Active Specialized  
Pro-resolving Mediators

Active IR is a patent pending technology exclusive to Metagenics for the global healthcare practitioner market that establishes a collective set of proprietary processes designed to isolate, measure, and verify the active SPMs 17-HDHA and 18-HEPE. Metagenics, in collaboration with world-renowned SPM experts, is the first to establish and set the standard for defining SPMs based on activity for use in nutraceutical products.

Active IR is a patent pending technology defining analytical methods for a standardized material profile.



# SPM Active®

Specialized Pro-resolving Mediators

## Supplement Facts

Serving Size 2 Softgels  
Servings Per Container 30

Amount Per Serving		% Daily Value
Calories	5	
Calories from Fat	5	
Total Fat	0.5 g	<1%*
Cholesterol	<5 mg	<2%*
Active Fractionated Marine Lipid Concentrate†	500 mg**	
SPM content standardized to 18-hydroxyeicosapentaenoic acid (18-HEPE) and 17-hydroxydocosahexaenoic acid (17-HDHA)		

\*Percent Daily Values are based on a 2,000 calorie diet.  
\*\*Daily Value not established.

Ingredients: Fractionated marine lipid concentrate [(anchovy and sardine oil, and mixed tocopherols (antioxidant)), softgel shell (gelatin, glycerin, water, pectin, and sorbitol), and lemon oil. Contains: Fish (anchovy and sardine).

**Directions:** Take two softgels once daily or as directed by your healthcare practitioner.

**This product is non-GMO and gluten free.**

**Caution:** If pregnant, nursing, or taking nutritional supplements or medications, consult your healthcare practitioner before use. Keep out of the reach of children.

**Storage:** Keep tightly closed in a cool, dry place.

SPM Active® is available in two sizes, 60-count and 120-count.

†Patent Pending.



## Why SPM Active®?

To boost the body's natural capacity to respond to physical stress and promote resolution.

SPM Active® is a revolutionary new nutritional product developed through advanced fractionation technology featuring standardized levels of specialized pro-resolving mediators (17-HDHA and 18-HEPE) found in marine lipids. SPMs play a key role in the resolution (i.e., completion) of an immune response, according to extensive preclinical research.\*

- ✔ A targeted nutritional approach that is designed to support the body's natural capacity to respond to physical challenges and resolve physical stress\*
- ✔ Specialized pro-resolving mediators are produced to help promote resolution of temporary inflammation after an episode of physical stress\*
- ✔ Supports healthy immune cell (i.e., macrophage) resolution-related activities\*

**Start the resolution with SPM Active®, a new and exclusive formula from Metagenics®.**



To order, contact your Metagenics representative or call: **800 692 9400 US**

**SPMActive.com**

metagenics.com

\* These statements have not been evaluated by the Food and Drug Administration. This product is not intended to diagnose, treat, cure, or prevent any disease.



MET2308 101016 © 2016 Metagenics, Inc. All Rights Reserved.